

YVEDDI
 P. O. Box 309
 533 N. Carolina Ave.
 Boonville, NC 27011
 Phone (336) 367-7251
 Fax (336) 367-3637
 www.yveddi.com

Please submit your news-
 worthy articles and pictures to
 drutledge@yveddi.com

- Births
- Engagements/Weddings
- Outstanding Achievements of
 an Employee
- Special Events
- Favorite Recipes
- Quotes/Jokes

CSBG has been busy during the winter in spite of the weather.

We would like to welcome our new
 Success Coaches, Tara Wallace-Boone,
 Stokes County and Claire Chandler,
 Davie County.



Other activities are listed below:

- Attended NETworx meeting and discussed CSBG program with Hispanic group
- Attended Head Start meeting and discussed CSBG program with Head Start Advocates
- Newspaper interview with representative of Salisbury Post for Davie Enterprise to discuss CSBG program
- Regina Chappell, CSBG Director and Dawn Cheek, Administrative Assistant attended NASCASP Conference in Washington DC
- Regina attended basic supervision training
- Regina, Dawn, and Emily Shore, Success Coach attended the Poverty Awareness Day conducted by Networx in Yadkin County
- Beth Casto and Elisha Harris conducted AR4CA and income eligibility training with new Success Coaches
- Regina, Beth Casto, and Elisha Harris, Success Coaches and ROMA Trainers conducted ROMA training for new Success Coaches
- Attended various webinars including DSS

Pictured at NASCASP Conference Pauletta Bourne from Alaska Community Action, Regina Chappell, CSBG Director, and Dawn Cheek Administrative Assistant

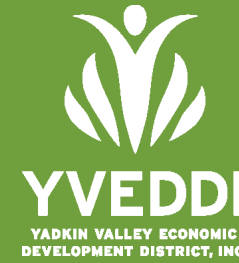
On November 25, YVEDDI worked with the American Red Cross and hosted a Blood Drive in honor of Shane Stout. Shane, as you know, is the Head Start Facilities Supervisor and he is battling cancer. Throughout treatment for cancer, Shane has depended on lifesaving blood transfusions. We were grateful for the opportunity to honor Shane and his family during this event and were so glad that he was feeling well enough to attend.

Thirty-one people attended the event and the American Red Cross was able to collect 30 units of blood.

Thank you to everyone that helped to make this day a tremendous success.

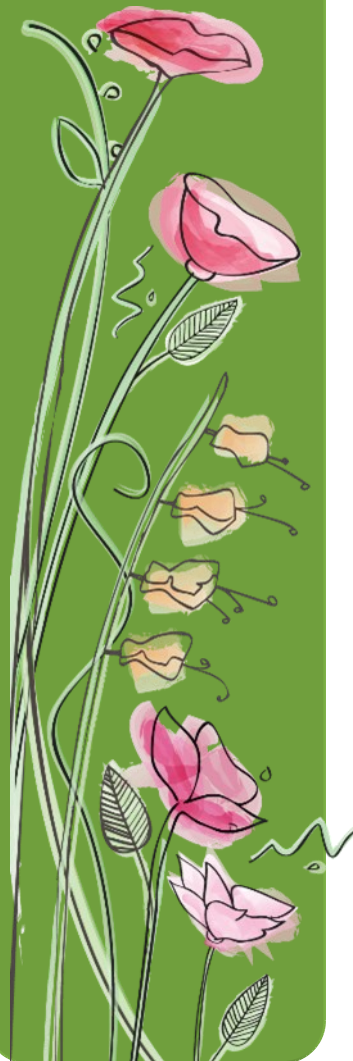


Shane Stout with wife, Cathy and sons, Grayson and Ethan



Mission Statement

Dedicated to improving the lives of individuals and families in Davie, Stokes, Surry, and Yadkin Counties through a variety of programs and partnerships to build stronger communities."



YVEDDI newsletter

APRIL / MAY / JUNE 2016

Welcome Aboard!

Domestic Violence/Sexual Assault
 Amanda Bryant, Advocate

Head Start
 Tonya Carpenter, Teacher
 Brittney Johnson, Teacher
 Lakin Shelton, Substitute Assistant Teacher

CSBG
 Lillian Claire Chandler, Success Coach
 Tara Wallace-Boone, Success Coach

Weatherization
 Casey Culler, Energy Auditor

Yadkin Valley Senior Center
 Melissa "Jane" Surratt, Director

Retired and Senior Volunteer Program (RSVP) Partnered with the American Red Cross

On March 7th, twenty-nine donors took the time to give the gift of life at the Community Blood Drive sponsored by YVEDDI Retired and Senior Volunteer Program (RSVP)

Every day more than 41,000 pints of blood are needed for patients across the country.

A Community Blood Drive is held at the Surry Red Cross Chapter in Mount Airy on the first Monday of each month, from 1:30 pm until 6:00 p.m. You can donate every 8 weeks by calling (336) 816-6280 or call 1-800 Red Cross.

We welcomed the opportunity to partner with the American Red Cross to help meet the critical needs of the community.

RAFFLE - RAFFLE



Approx. 150 lbs.
 of meat from
 Foothills Meat
 Center

Vacuum sealed and ready to freeze
Tickets on Sale Now!
\$2.00 each

Tickets available at: Pilot Mtn. Nutrition Site, Mount Airy Nutrition Site, East Bend Nutrition Site, Yadkinville Nutrition Site, Jonesville Nutrition Site, YVEDDI District Office and Foothills Meat Center.

Drawing: June 23, 2016

- Winner will receive:
- 12-16 Ribeye Steaks
 - 25 lbs. Ground Chuck
 - 2 Boneless Pork Loins
 - 20 lbs. Boneless Chicken Breast
 - 5 Beef Roasts (avg. 4 lbs. each)
 - 10 lbs. Beef Stew
 - 10 lbs. Cube Steak
 - 20 lbs. Chicken Tenders

All proceeds benefit the YVEDDI Meals-on-Wheels Program


 Newsletter Editor:
 Donna Rutledge,
 Communications
 Specialist



Well-Seasoned Players, the Theatre Group of Surry Senior Center in partnership with the YVEDDI Jones Family Resource Center and the NoneSuch Playmakers

Presents

On Golden Pond

By Ernest Thompson

FEATURING GARY MAXEY as Norman Thayer and JANE TUCKER as Ethel Thayer

Directed By Brack Llewellyn

Friday, June 24
2:00 PM | 7:30 PM

Saturday, June 25
7:30 PM


The L. H. Jones Auditorium 215 Jones School Road | Mount Airy, NC 27030 (336) 786-6155

Admission \$10

Purchase Reserved Tickets At: YVEDDI Surry County Senior Centers in Mount Airy and Pilot Mountain


 A portion of the proceeds from this production will go to support YVEDDI Surry Senior Centers, the YVEDDI Jones Family Resource Center and Grace's Closet

On Golden Pond is presented by special arrangement with Dramatists Play Service, Inc. New York.




Holiday Schedule

Memorial Day
Monday, May 30th



HAPPY BIRTHDAY!

April		May		June	
Lydia Johnson	4/1	Shirley Key	5/3	Vivian Easter	6/1
Toni Snow	4/2	Deborah Lane	5/3	Donna Snow	6/1
Christine Fletcher	4/2	Belinda Stillwagon	5/5	Regina DeWitt	6/2
Gelee Beck	4/3	Pamela Carter	5/9	Jessie Parsons	6/3
Peggy Vanhoy	4/5	Jr. Eddleman	5/10	Pearl Cleary	6/4
Allison Winters	4/5	Jeannie Easter	5/11	Marlen Varona-Jacobo	6/4
Angelina Melvin	4/7	Lois Howes	5/15	Randy Walker	6/5
Melissa Casstevens	4/8	Amy Key	5/15	Melissa Ledbetter	6/6
Gilda Pruitt	4/18	Brittany France	5/22	Robert Janson	6/8
Linda Trivette	4/19	Jennifer Hawks	5/26	Nelda Caudle	6/10
Tracey Speight	4/20			Anthony Aquilano	6/12
Jackie Doub	4/21			Betty Tucker	6/14
Patricia Hernandez	4/23			Evelyn Money	6/20
Annalisa Davis	4/28			Emily Shore	6/21
Frieda Belcher	4/30			Rhonda Beavers	6/24
Sherman Smith	4/30			Lue Stewart	6/26
				Shirley Shaffner	6/27
				James Furr	6/28
				Tina East	6/29
				Crystal Mullis	6/29
				Michelle Edwards	6/30

If you think you're too small to make a difference, you haven't spent a night with a mosquito.

~ African Proverb ~

Promotions

Weatherization
Jennifer Hawks, Office Assistant promoted to full-time.

Transportation
Lois Howes, Office Assistant/Data Entry promoted to full-time.

Length of Service

5 Year
Clara Berrum Urquiza, HS Family Advocate
Patty Vestal, MHS Education Coordinator/
Program Assistant

10 Year
Frieda Belcher, HS Admin. Assistant/
NCPK Coordinator
Evelyn Money, Grant Accountant

20 Year
Angelina Melvin, HS Family Advocate

Always believe that something wonderful is about to happen.



Kevin Edwards, Operations Manager for YVEDDI Public Transportation recently completed the Transportation Leadership Development Program (TLDP) sponsored by NC State University and the North Carolina Department of Transportation – Division of Public Transportation. This unique 12 week program allows participants the opportunity to develop skills which apply to “decision-making, leadership and mentoring.” During this program Kevin was required to complete an individual project that related to and had some bearing on YVEDDI Public Transportation. As his project Kevin chose to conduct a study of the financial impact of servicing and maintaining the wheelchair lifts of YVEDDI’s fleet of 44 lift equipped vehicles. He determined that YVEDDI spends over 17,000.00 annually with an outside vendor to properly maintain the wheelchair lifts on the YVEDDI lift vehicles. Cost cutting measures were identified and implementation has already begun.

For his successful completion of the TLD Program Kevin was awarded a Certificate of Completion as well as 12 Continuing Credit hours from NC State University.