

YVEDDI Domestic Violence Program

The YVEDDI Domestic Violence Programs are operated in the counties of Stokes, Surry, and Yadkin.

The major focus of services is to provide emergency services and assistance to persons who have been victimized by domestic violence.

Basic services provided by programs in each county are as follows:

- 24 Hour emergency crisis line
- Court Accompaniment
- Client Counseling
- Emergency Transportation
- Advocacy
- Off-site Shelter
- Trained Volunteers
- Community Education
- Professional Training
- Domestic Violence Program Advisory Council
- Local Domestic Violence Program Office

Important Numbers & Information

Emergency 911

Stokes County

Family Violence stokesdv@yveddi.com	336-593-9323
Social Services	336-593-2861
Sheriff	800-672-2851
Magistrate/King	336-983-6545
District Attorney	336-593-5455
Clerk of Court	336-593-9173
Walnut Cove Police	336-591-7121
King Police	336-983-0886
Danbury Health Dept.	336-593-2400
Walnut Cove Health Dept.	336-591-5018
Rockingham Shelter	336-342-3331
Winston-Salem Shelter	336-724-3979
Victim's Comp. #	800-826-6200

Surry County

Domestic Violence surrydv@yveddi.com	336-356-2014
Clerk of Court	336-386-3700
Sheriff	336-401-8900
District Attorney	336-386-8178
Health Dept.	336-401-8400
Social Services	336-401-8800 or 336-401-8700
Pilot Mountain Police	336-368-4725
Dobson Police	336-356-8161
Mount Airy Police	336-786-3535
Elkin Police	336-835-1111
Human Services	336-783-8787
Surry County Jail	336-401-8975
Legal Aid	800-660-6663

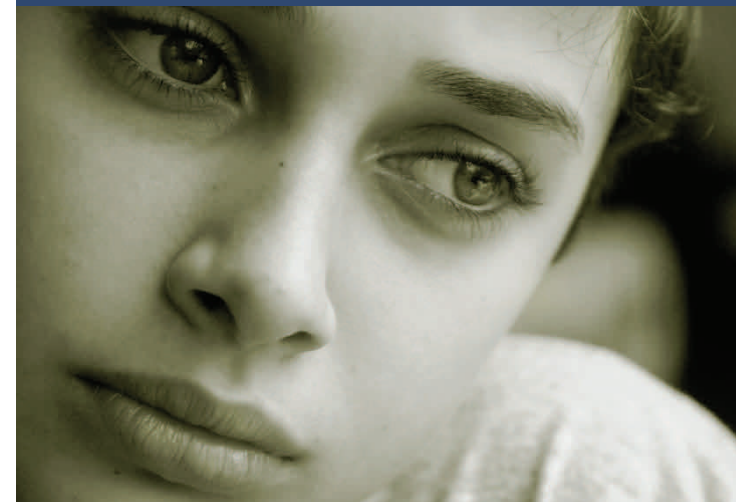
Yadkin County

Family Violence yadkindv@yveddi.com	336-679-2072
24 Hour Crisis Line	336-679-2500
Sheriff	336-679-4217
Yadkin Police	336-679-2863
East Bend Police	336-699-8560
Boonville Police	336-367-7941
Magistrate	336-679-2593
Clerk of Court	336-679-8838
District Attorney	336-667-6361

www.yveddi.com



Domestic Violence



Serving Stokes, Surry & Yadkin Counties

Prevention

Heightening public awareness of domestic violence and engaging in precautionary measures are crucial aspects of our efforts to rid society of domestic violence. This year, millions of women will be battered by a husband, boyfriend, or former partner. It is up to us as a community to know what the signs of abuse are, and what to do to prevent the tragic cycle of domestic violence from continuing into the next generation.

Defining Domestic Violence

Domestic Violence is a crime. It is a pattern of behavior that may include physical, emotional, psychological, sexual and economic abuse that affects people who are married, dating, living together, and/or related to each other. If you recognize any of the following signs in your relationship or in someone you know, it is a strong indication that there is domestic abuse taking place. Please seek help from one of the resources in this brochure.

- Constant criticism, humiliation and berating.

Plan of Action

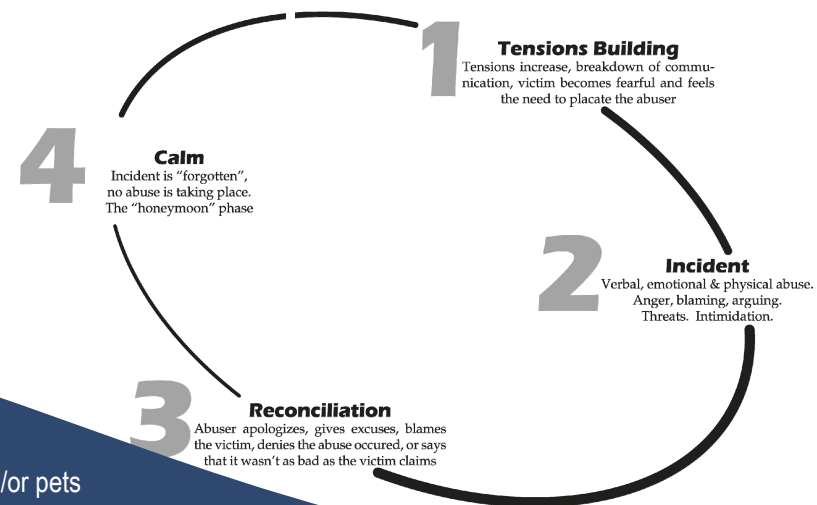
If you are being abused - emotionally, psychologically, or physically - by a current or former partner, we urge you to seek help from one or more of the many public and private resources available for victims of abuse. While it is our sincerest hope that you will find the courage to leave this situation quickly and permanently, you should at least have a safety plan in place that prepares you to respond immediately to dangerous situations. Below you will find some of the steps recommended by domestic violence professionals for designing your own safety plan.

- Keep important phone number readily available (including police, hotline, friends, family, and shelter).
- Ask a trusted neighbor to call the police if suspicious noises are heard coming from your home.
- Choose a word or phrase that you will use to alert friends or family that you need immediate help. Share it with your children, neighbors, and other people you would contact in an emergency.
- Put aside money for an emergency and a small bag with extra clothes for you and your children.
- Make arrangements for a temporary place to stay in a crisis. Know how to contact your local domestic violence shelter.
- Keep your purse, credit cards, medication, social security card, insurance policy, marriage licenses, birth certificate, an extra set of keys, and your identification in a safe place where you can grab them quickly in case you need to leave your home in a hurry.
- Change your daily routine to avoid contact with your abuser if it is someone who does not live in your home.
- Take a self defense course.

Cycle of Abuse

Our Mission Statement

To provide services to victims and their children to address domestic violence issues and to assist victims and children to alternative solutions to the problems.



- Extreme jealousy and/or over-protectiveness
- Threats against you, your children, family, and/or pets
- Deprivation of money, credit cards, and other financial resources. Forced surrender of your paycheck and any other income.
- Intimidation and manipulation
- Shoving, hitting, biting, kicking or smacking
- Forcing sex or sexual acts
- Limitation of social activity

Funded by Yadkin Valley United Fund, Yadkin County United Fund, Stokes County United Fund and the United Fund of Greater Mount Airy.